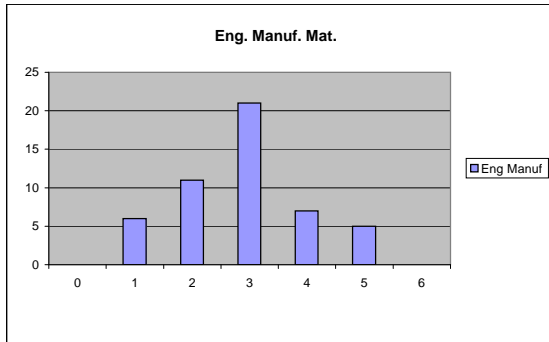


Estatística											
pergunta	nsub	caiu	abst	A	B	C	D				% de alunos que acertaram
1	1	50	0	5	42	0	3	mat	0,1	10	
2	1	50	0	13	22	11	4	seculo	0,26	26	
3	1	18	0	17	0	0	1	f(x+h)	0,944444	94,4	
3	2	17	0	17	0	0	0		1	100	
3	3	15	0	13	0	1	1		0,866667	86,7	
4	1	50	0	21	8	18	3	raiz x	0,42	42	
5	1	50	0	36	9	2	3	raiz ab	0,72	72	
6	1	50	0	22	13	5	10	raiz 6	0,44	44	
7		50		7				desig	0,14	14	



Eng Comp	Eng Manuf	
2	0	0
5	6	1
10	11	2
14	21	3
11	7	4
7	5	5
3	0	6

