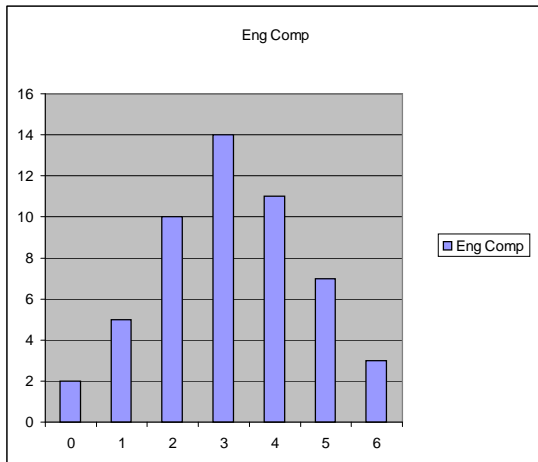


Estatística:										
pergunta	nsub	caiu	abst	A	B	C	D		% de alunos que acertaram	
1	1	52	0	8	42	2	0 mat	0,153846	15,4	
2	1	52	0	21	20	7	4 seculo	0,403846	40,4	
3	1	17	0	15	0	0	2 f(x+h)	0,882353	88,2	
3	2	23	0	21	1	1	0	0,913043	91,3	
3	3	12	0	9	2	1	0	0,75	75,0	
4	1	52	1	23	10	16	2 raiz x	0,442308	44,2	
5	1	52	0	39	10	2	1 raiz ab	0,75	75,0	
6	1	52	1	28	12	6	5 raiz 6	0,538462	53,8	
7		52		10				0,192308	19,2	



Eng Comp	
2	0
5	1
10	2
14	3
11	4
7	5
3	6

